

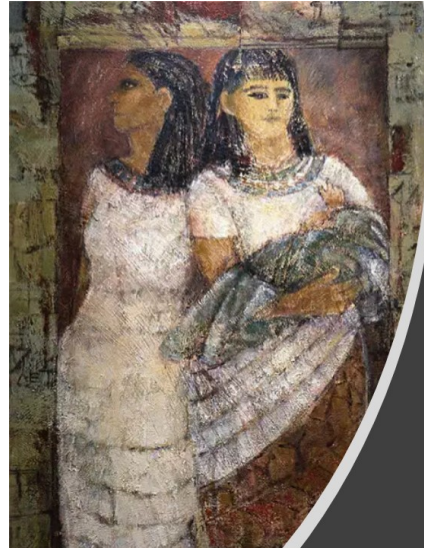


# BASCOMB NEWS

AUGUST 20, 2020



The Bishop’s Cabinet and our District Superintendent have recommended that we not hold public services unless our county is in the “green” on this website: [globalepidemics.org](http://globalepidemics.org). We are now in the “red.” We will not hold public services this week, but you will still be able to experience our services online through Facebook, our website, and YouTube.



“Mid-Wife Rebels”

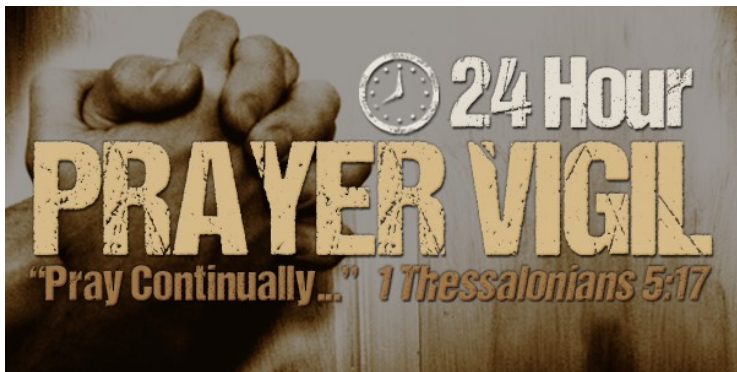
Exodus 1:8-2:10

August 23 — 12<sup>th</sup> Sunday after Pentecost

Sermon Title: “Mid-Wife Rebels”

Scripture: Exodus 1:8-2:10

We are familiar with rebellion; it is the stock and trade of adolescence. It’s a way for us to test the boundaries and establish what kind of person we are going to be: “go along to get along,” or “rebel with a cause.” I guess we need to hold both in tension while understanding that rebellion better be worth it because it comes at a cost. We only win justice and change in society at a cost to the status quo, the normal, what we are used to living in and under. Now killing first born male babies may seem “open and shut” for these mid-wives, but every act of rebellion defies order and authority – it breaks the rules and forces us to choose. Look at this story and see who is being defied. How will you choose the next time you run into a rebellion? Darth Vader and the Empire would like to know!



## SEPTEMBER 11-12

Please be a part of our Prayer Vigil. Sign up for a time by emailing Tammy at [office@bascombumc.org](mailto:office@bascombumc.org). The next page shows available time slots.





# Sign-up

## Friday, September 11

Hour .....	Prayer Leader Name
7PM – 8PM .....	Roger Williams
8PM-9PM .....	Mike Oaks
9PM-10PM .....	
10PM-11PM .....	Jim & Joy Ledoux
11PM-12 midnight .....	

## Saturday, September 12

Hour .....	Prayer Leader Name
12AM-1AM .....	
1AM-2AM .....	Sonny Sellers
2AM-3AM .....	Ron Lewis
3AM-4AM .....	
4AM-5AM .....	
5AM-6AM .....	Elizabeth Young
6AM-7AM .....	
7AM-8AM .....	Linda Bidy
8AM-9AM .....	
9AM-10AM .....	
10AM-11AM .....	Jane Allen
11AM-12 NOON .....	Earnie Allen
12PM-1PM .....	
1PM-2PM .....	
2PM-3PM .....	Denise Lewis
3PM-4PM .....	
4PM-5PM .....	
5PM-6PM .....	
6PM-7PM .....	Carolyn Williams

# Bascomb UMC – Reopen Plan

## General Guidelines

Always apply during pandemic

These guidelines have been developed based on the [guidance](#) provided by Bishop Sue Hauptert-Johnson and the Cabinet of the North Georgia Conference.

<https://www.ngumc.org/newsdetail/message-from-bishop-and-cabinet-on-rising-numbers-of-covid-19-cases-in-our-region-14122409>

Social Distancing rules apply.

- Maintain 6ft distance of all people.
- Masks are **required** inside the building.
- Fellowship Hall capacity will be reduced to 40 people.
- New Fellowship classroom capacity will be reduced to 10 people.

Bathroom Availability – Narthex only

Fellowship Hall entrance, Fellowship Hall Bathrooms, hall bathroom, kitchen, prayer room, library, chapel, upstairs (youth area), downstairs (see exceptions) are all closed.

No food allowed in the building.

Kitchen is not available.

*All decisions will be made based on the Cherokee County color rating. This information can be found at <https://globalepidemics.org/key-metrics-for-covid-suppression/>*

Filter Graph by Georgia / Cherokee County.

## Reopening Stages

In-Person meetings are considered any meetings of 2 or more people that occur on the grounds of Bascomb United Methodist Church, excluding Sunday Worship Services.

**Red** - If the county is red, the church is effectively closed.

<b>Church Building</b>	Closed
<b>In – Person Worship</b>	None
<b>Outside Meeting</b>	None
<b>In – Person Meetings</b>	None
<b>Staff</b>	Remote

**Orange** - If the county is orange, the church is effectively closed.

<b>Church Building</b>	Closed
<b>In – Person Worship</b>	None
<b>Outside Meeting</b>	Allowed if social distance guidelines are followed
<b>In – Person Meetings</b>	None
<b>Staff</b>	Remote

Office activities will be managed by Tammy Smith, with an emphasis on working remotely.

## Yellow

When the county moves to yellow, we will begin to allow additional groups to meet in the church. We will not begin right away. For In-Person meetings there must be two (2) consecutive weeks of yellow before we move to these lessened restrictions. In-Person worship may begin immediately upon movement to yellow.

<b>Church Building</b>	Limited Open
<b>In – Person Worship</b>	Trustee Discretion
<b>Outside Meeting</b>	Allowed if social distance guidelines are followed
<b>In – Person Meetings</b>	Limited – See note below
<b>Staff</b>	In Building

Available rooms for In – Person meetings: **New Fellowship, Fellowship Hall**

In – Person meetings will be available for groups that are comprised of entirely Bascomb UMC members.

## Green

When the county moves to green, we will begin to allow additional groups to meet in the church. We will not begin right away. For In-Person meetings there must be two (2) consecutive weeks of green before we move to these lessened restrictions. In-Person worship may continue or begin immediately upon movement to green.

<b>Church Building</b>	Open – See note below
<b>In – Person Worship</b>	Yes
<b>Outside Meeting</b>	Allowed
<b>In – Person Meetings</b>	Allowed – See note below
<b>Staff</b>	In Building

Available rooms for In – Person meetings: **New Fellowship, Fellowship Hall**

In – Person Meetings will be available for groups that are comprised of entirely Bascomb UMC members or led by a Bascomb UMC member. Groups with no direct connection to Bascomb UMC will need approval from the Trustees.

\*The entire Reopening Plan can be found on our website.